



sovereign group limited

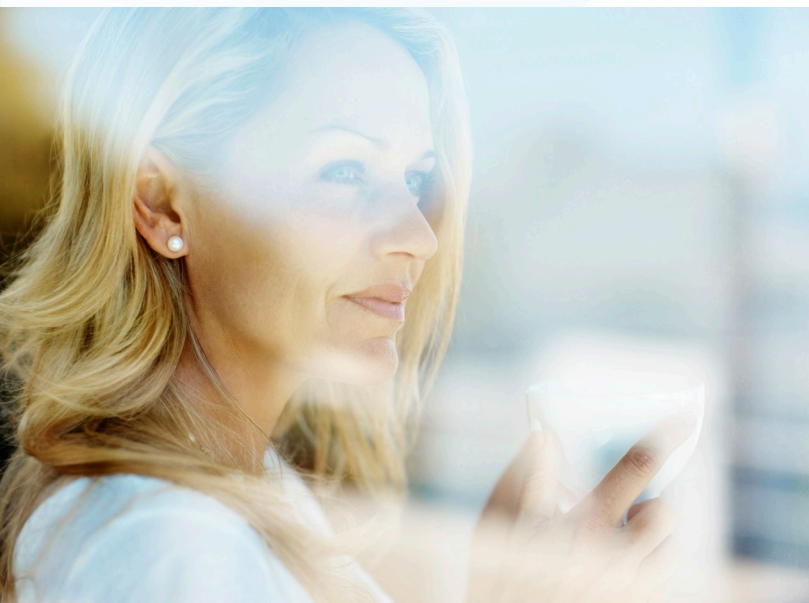
Social Housing



The VEKA UK Group is one of the largest manufacturers of cost effective, energy efficient window, door and curtain walling systems in the UK. Our Group contains many of the best known names and brands in the commercial sector – VEKA, Halo, Network VEKA and Bowater Doors. For over 25 years, The VEKA UK Group has been providing innovative, sustainable products to meet the needs of our clients and contractors alike.

We work very closely with tenants and tenant groups to ensure minimum disruption, involving them in key decision making such as colour, ensuring that they are fully informed throughout the process and advising them on the maintenance of their new windows and doors.





The Social Housing sector is embracing a wave of change in the provision of decent and affordable housing as a cornerstone of the creation of sustainable communities.

Secure and stable communities need appropriate places to live, good health and educational facilities, spaces to play and zones of economic growth. Levels of investment in housing, stock refurbishment and new build development have increased, yet budgets remain stretched given the scale of challenge. There are competing priorities for investment and the need to recognise the desires of tenants who want to influence decisions that affect their homes.

VEKA is committed to helping create these communities of the future by providing sustainable products delivered by a coordinated supply chain.



The architect and contractor

The VEKA UK Group has a very strong connection with architects and framework-approved contractors working in social housing.

20 years' experience in the delivery of commercial projects has provided us with the skills and knowledge required to work alongside architects, quantity surveyors, main-contractors, sub-contractors and internal maintenance teams.

Here at The VEKA UK Group, we are experts in the design and delivery of long term savings on repair, maintenance and replacement cycles.



Integrated supply

VEKA has developed a network of window and door fabricators throughout the UK with extensive experience in the social housing and public sectors.

This network means the company has the resources and capabilities to supply the largest window refurbishment projects, combining production from various partners in a well-managed delivery programme.

This gives the best of both worlds: local service supported by nationwide resources.

The **benefits** of using VEKA

The VEKA UK Group is about much more than simply the supply of outstanding PVC-U windows and doors. We offer a total support service from planning and design through to fulfilment and completion, giving you the confidence that comes with knowing your commercial commitments will always be met. The social housing sector, just like any other, deserves this commitment to reliable, sustainable solutions.

We understand what you need

Our team get to know your requirements in detail, offering the right combination of design, specification and consultation to ensure a successful project. Our social housing support services include:

- Installation surveys
- Prototype provision
- Product testing
- CAD design
- Wind-load calculations
- U-value calculations

The in-house advantage

Because so many of our services are in-house, our solutions are fast and flexible. Our in-house CAD service delivers drawings that can assist with commercial tenders, with training available for fabricators. Our in-house testers enable us to respond to your requirements quickly, and our in-house recycling facilities mean we can recycle and reuse post-consumer windows and doors.

Tested and endorsed

All our products carry accreditation from a range of trusted third-party testing bodies, ensuring that we always meet market and industry standards.

Products tailored to your requirements

Our product range is flexible, so items can be tailored to suit your needs.

A trusted network with scalable volume

Our long-standing relationships with high-quality UK fabricators enable you to benefit from their local knowledge and expertise, while their capabilities mean we can offer the scalable volume to meet the needs of every project.

UK-wide installation and support

Wherever you're located, our nationwide commercial sales support team give you all the experience and insight you need, while our Approved Installer Scheme means that no other systems company knows installers better than The VEKA UK Group. Our fabricators and installers are vetted and trained to ensure every project is completed to the highest standards by installers based in your region.

Your turn-key solution

Working with our partners, a project manager will co-ordinate the installation within your social housing programme, minimising disruption and ensuring your project runs to time.

We've got the future covered

Our forward-thinking approach means we invest heavily in product innovation, creating the solutions for tomorrow as well as today.

We're here to stay

Customers have been relying on VEKA for decades, and our products and services are tried, tested and trusted.



Why upgrading and updating makes sense

Old, damaged windows can be draughty and even dangerous. Replacing them with modern PVC-U systems will deliver benefits almost as soon as the job is complete.

Withstand the weather

Our PVC-U systems, tested to BS 6375 Part 1, are designed to withstand the worst of the weather, including decades of driving wind, rain and harsh sunlight. The memory of old windows will fade, but the colour of new ones won't.

Savings that count

Our products feature some of the industry's lowest 'U' values, meaning they can help reduce your carbon footprint and lower the heating bills. We can work out the potential carbon and financial savings over one, five or ten years, demonstrating how you could free up financial resources to spend elsewhere.

Safety and security

The safety egress handles and locks on our products are vital for swift exit in an emergency, and because our windows also meet Secured by Design standards (tested to PAS 24), they offer maximum protection against intruders too.

Keep the noise out

Outdoor noise belongs outdoors, and with sound reduction of up to 52dB, our windows really do make for more peaceful living.

Looking good matters

Ageing windows harm a property's appearance, but replacing them will demonstrate real investment, create better conditions and help the site look its best.

Low maintenance

Our PVC-U windows won't swell, rot, crack, warp or fade, and because they need little maintenance compared to timber, resources are freed up for use elsewhere.

Strong and stable

We use multi-chambered construction in all our window profiles. This gives extra stability, helps facilitate drainage, and provides an insulated reinforcement chamber.

Achieve best value

Best value always matters, particularly when public funding is involved, and with VEKA, you can be sure you're getting quality products that always meet the very highest standards.

The quality you demand

With decades of experience behind us, we understand the importance of standards and accreditations in building and social housing, and our products meet the requirements of all appropriate bodies. With the support of our experienced team, your project will be in the best possible hands.



Casement Windows

Unlimited options for personalisation

The Casement window range is designed to provide the maximum flexibility for fabricators and clients alike.

It provides the ideal range of products to suit any window replacement programme or building construction type within the social housing market.

The suite allows for the production of top hung and side hung casements to accept a full range of hardware. This allows full compliance with all the latest Building Regulations and meets all the latest product testing standards.

Key Features

- Internally beaded for security
- Products designed to accept the latest hardware types
- Products enable compliance with latest Building Regulations
- Choice of bevelled or sculptured
- Glazing options up to 40mm sealed unit depth
- Products tested to meet the performance requirements of BS 6375 wind and water testing
- Products tested to meet latest security standards of PAS 24
- Achieves U-values as low as 0.8W/m²K using triple glazing
- Achieves U-values as low as 1.3W/m²K using double glazing
- Noise reduction up to 40dB (RW)
- PVC-U screw ports allow secure fixing of hardware



Tilt and Turn Windows

Good looks and secure ventilation

Tilt and Turn windows are often used where there is a high-rise element or a requirement for cleaning to be carried out from the inside of the building.

Key Features

- Two-way operation offers ventilation in the first or tilt position, along with cleaning or egress in the second or turn position
- Child restrictors and 'safe' locking handles provide safety in use features
- High security locking mechanisms
- Windows tested to PAS 24
- Windows open inwards into the room
- Achieves U-values as low as 0.8W/m²K
- Noise reduction up to 40dB (RW)
- Choice of bevelled or sculptured
- SmartSash Tilt and Turn window also available



Tilt

This position allows a window to tilt open inwards, providing good ventilation but without compromising safety



Turn

The whole sash opens out into the room allowing for easy cleaning or maintenance

Vertical Slider

The Vertical Slider window is designed to offer the potential to perfectly match the existing timber product in their housing stock. The VEKA UK Group offers a choice of two Vertical Sliders, recognised as some of the best on the market.

Vertical Sliders are ideal for Conservation areas taking all the finest points of the traditional design, PVC-U version, matches the aesthetic appeal while offering superior performance and maintenance benefits.

Key Features

- Traditional front to back profile dimension to match existing box arrangements
- Sections designed to match traditional aesthetic appeal
- Deep bottom rail options
- Upper and lower sashes tilt inwards for ease of cleaning
- Traditional astragal Georgian bar arrangements
- Traditional hardware design and functionality
- Full range of style options and sizes to enable replacement of traditional products
- U-values as low as 1.3W/m²K



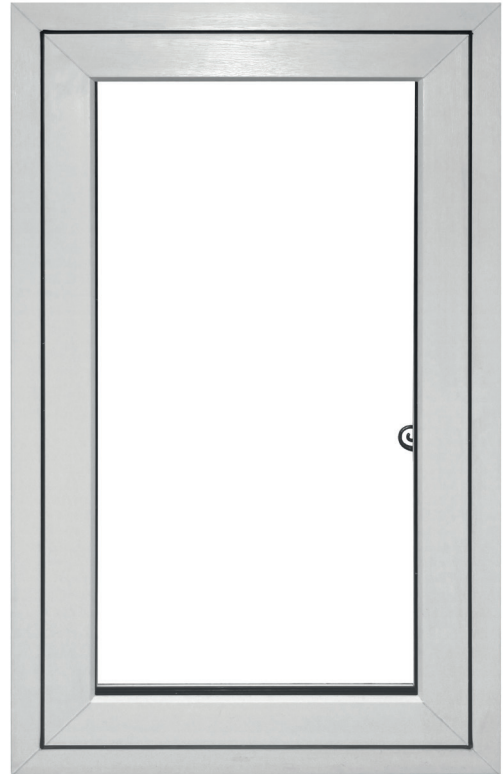
FlushSash

Reminiscent of early 19th Century timber windows, FlushSash from Halo combines elegant Georgian style with the modern technical benefits of PVC-U to offer smooth style and seamless performance.

Designed to maximise the efficiency and flexibility of Halo's existing System 10 window system, FlushSash allows fabricators and installers to extend their product range with minimal additional stock holding and tooling requirements, to offer an effective flush casement window for the traditional and heritage timber window market, where authentic replication of the original style and finish is required.

Key Features

- Achieves U-value of 1.3W/m²K
- Achieves WER 'A' Rating (with 28mm double glazed IGU using float glass)
- Accepts double and triple glazing
- Mechanical or welded transoms and mullions
- Choice of bevelled or sculptured Georgian bar enables recreation of original timber styles
- Standard installation procedure
- Choice of bevelled or sculptured
- 70mm system



Fully Reversible

Fully reversible windows are often used in social housing projects where there is a high rise element, or where there is a requirement for cleaning to be carried out safely from the inside of the building.

As a result of significant financial investment and extensive technical development VEKA and Halo profiles now offer a cost effective, 'A' rated fully reversible frame with a wealth of innovative features and benefits:

Key Features

- U-values as low as 0.8W/m²K (Code for Sustainable Homes, level 5)
- 'A' rated frames with just a double glazed unit
- Totally compatible with other VEKA systems
- Unique seal system for improved weather performance
- Window reverses within the axis of the hinge (not entering the room)
- Excellent 'stand -alone' product for fabricators requiring better WER
- Unique 4 chamber profile system for enhanced thermal performance
- Multi-position child restrictors



Variations

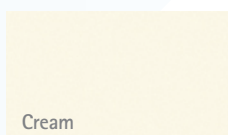
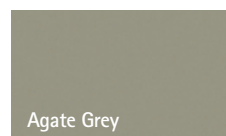
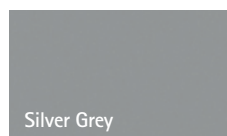
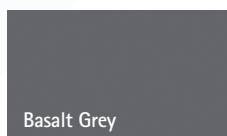
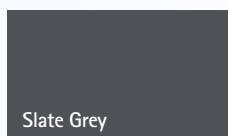
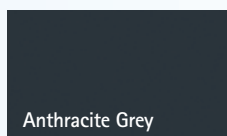
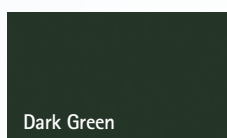
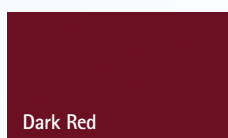
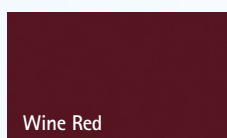
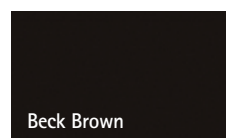
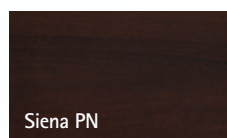
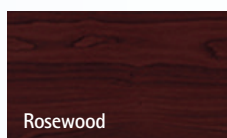
Colour your world...

The VEKA UK Group offer a fantastic choice 18 high quality foils, meaning you not only get the astounding level of product quality you would expect from The VEKA UK Group, but also the freedom to make your building truly unique.

Don't compromise on aesthetics: combine bright and stylish colours with technical performance, years of trouble-free performance and low maintenance.

Key features – larger range of colours

- Our range of 18 colours opens up a great choice of styles and finishes, with woodgrain effects and colours that are both practical and stylish
- A key feature of the Variations foil range is that it has been created as a mainstream part of our overall offer with simple ordering, class-leading lead times and order quantities that ensure that efficiency within our supply chain is not sacrificed by the breadth of colour choice we are able to offer



VEKA recycling

Quality windows needn't cost the earth

VEKA has always led the way in the environmentally responsible use of PVC-U and VEKA Recycling is a major part of this, with its 'Closed Loop' technology, which means old windows can be recycled to a level of purity to be put straight back into new windows rather than lower-grade products.

This was pioneered by VEKA Umwelttechnik in Behringen, Germany and VEKA Recycling now has a plant in the UK to further reduce the product's carbon footprint.

These plants are so efficient that over 90% of 'post-consumer' waste and over 95% of manufacturing waste can be recovered and recycled. In the UK, the PVC-U is used in VEKA Infinity profile system, which uses up to 80% recycled material locked inside a thin layer of virgin material on visible surfaces.

VEKA Recycling offers a sustainable and environmentally friendly solution, with products achieving an 'A' rating in the BRE Green Guide.

Many installation companies have not been slow to note that removal and recycling this way offers real cost benefits over landfill as well as the obvious reduction in environmental impact. VEKA Recycling is equally capable of reprocessing any PVC-U window, irrespective of the original system manufacturer; eliminating any need for recognition or selection. While environmentally rewarding, it also makes good financial sense. Saving the substantial cost of landfill, it also generates revenue for fabricators and installers by enabling them to attract greater numbers of eco-minded customers.

Up to now, post-consumer windows have often been referred to as 'end-of-life'. Now, VEKA Recycling has shown that the end of each window's life is only really the beginning of the next.

VEKA Recycling in the UK is only one part of a growing global commitment by VEKA Worldwide.

Corporate Social Responsibility

As a dedicated partner for the social housing sector, VEKA understands the importance of acting in a socially responsible way, and in contributing to the wider social agenda in all projects.

This includes recognising the needs of all stakeholders including employees, suppliers, customers, the local community and the wider society. The goal is the triple bottom line of sustainability, which consists of social, environmental and economic benefits.



Recycled profile systems



The VEKA Infinity System combines the highest levels of technology and style that you would expect from a VEKA window system, coupled with an environmental conscience, as Infinity profiles contain up to 80% recycled content, dependent on window style.

Extruded to BS EN 126087 extrusion performance standards, Infinity maintains UV stability, cold impact classification and heat reversion to provide the performance of virgin profile, with the social benefits of a recycled product – a must for many projects in the commercial marketplace, and brought to you by the first windows systems company to establish a PVC-U recycling plant.

Key Features

- A suite of profiles is available with the reassurance of the VEKA brand – the most specified profile in the world
- Fully compatible with the Matrix 70 system – existing manufacturing and component parts can be used

- A strong and positive sales message that is environmentally conscious coupled with classic bevelled good looks
- A wide choice of window styles plus the knowledge that quality windows needn't cost the earth!
- Not only can Infinity achieve 'A' ratings but with appropriate triple glazed units, Infinity casement windows can also achieve U-values as low as 0.8W/m²K
- The Infinity system features classic bevelled good looks to suit any style of property and is available in white
- The virgin top skin ensures perfect exterior finish which is 100% quality and colour compatible with the Matrix 70 suite of profiles
- Creates a reduced carbon footprint of 84% for the recycled element of the product without any detriment to the performance and guarantee of Infinity against profiles extruded using virgin material



Virgin skin ensures perfect aesthetics

Composite Doors

Composite doors are high performance doors ideal for the commercial sector.

Residential and specialist composite doors deliver outstanding energy-efficient performance, low maintenance, high security and robust construction, at affordable prices.

Energy efficient composite doors save on both heating bills and the environment, delivering some of the lowest U-values the industry has to offer.

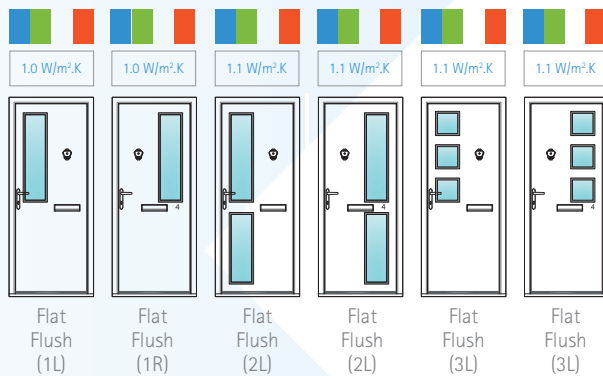
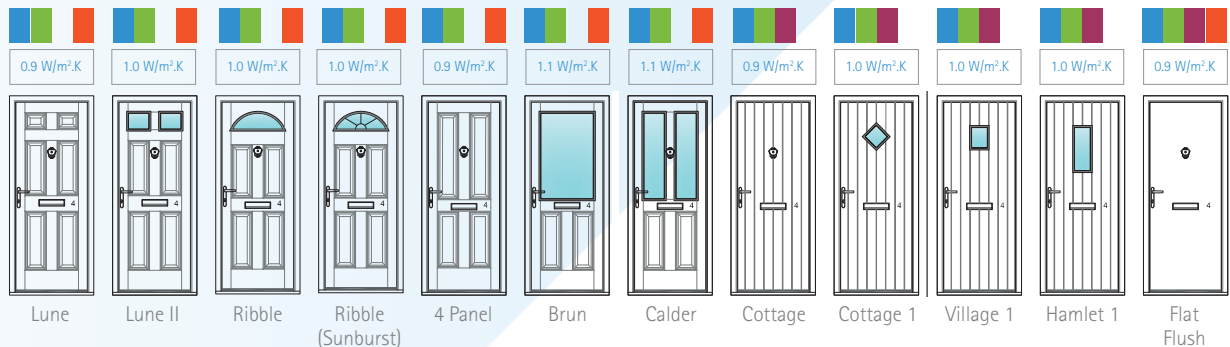
With steel reinforced outerframes, anti-jemmy hinges and key/thumb turn cylinder locks providing high security, composite doors are the perfect solution.

Key Features

- U-values as low as 0.9W/m2K
- Achieves up to Level 6 of Government's Code for Sustainable Homes
- Double rebate, double compression seals
- High security locks and hinges
- Durable and robust construction
- Part 'M' low threshold
- Fire and utility door ranges also available

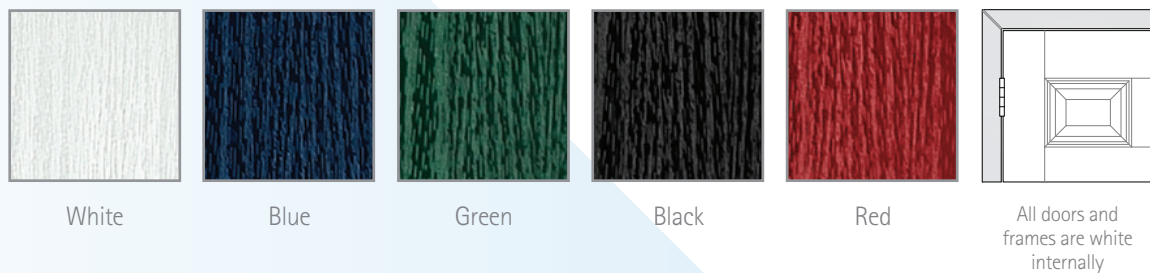


Composite Doors Styles



Cassette Glazing - 26mm O/A. Clear laminated glass to the outer pane. Toughened inner can be supplied as Clear or Cotswold pattern.

Standard external door colours



Special external door/frame colours





To find out more, call

01282 618171

info@sov-group.co.uk

sov-group.co.uk

