

designed for living

WINDOWS | DOORS



Sovereign
GROUP LIMITED

QUALITY | VALUE | CHOICE

These words are the three pillars that underpin the service we provide to our customers. Everything we do is motivated by these three - from manufacture right through to installation.

Welcome to your new look home

We are the first choice for customers throughout the area. Our reputation for quality, service and price means that much of our work comes from recommendations.

Congratulations! You have made the first step in buying new windows, doors or a conservatory for your home. And what a difference they will make to you and your family... improved security, reduced energy bills, less noise and virtually no maintenance - not forgetting the visual impact! These are just a few of the ways you will benefit from our products.

With our energy efficient windows, your home will be a 'greener' home too - by reducing the amount of energy you use to heat your home, our windows will help you to reduce the amount of greenhouse gases you produce.

Our products will enhance your home and your lifestyle. With windows, doors and conservatories in a vast array of styles and colours - you have the opportunity to perfectly tailor them to your needs and requirements.

Choose your frame...

We have a choice of two VEKA window profile styles for you to choose from, bevelled and sculptured profiles. Both offer superb security features, high energy efficiency and an attractive hand crafted finish. Available in a range of colours and finishes and a selection of colour matched handles, letterplates, numerals, knockers and spyholes - you can tailor your frames to match your home perfectly - whatever the period.



Bevelled

Angular lines give bevelled windows a clean, modern look.



Sculptured

Sculptured windows are distinguished by softer, rounded lines.

Key features

We have taken the time to choose the best profile available on the market. Our profiles meet and exceed latest industry standards, giving you the peace of mind to know that you are buying quality - BSI approved quality. In addition to that we add a 10 year, no questions asked guarantee.

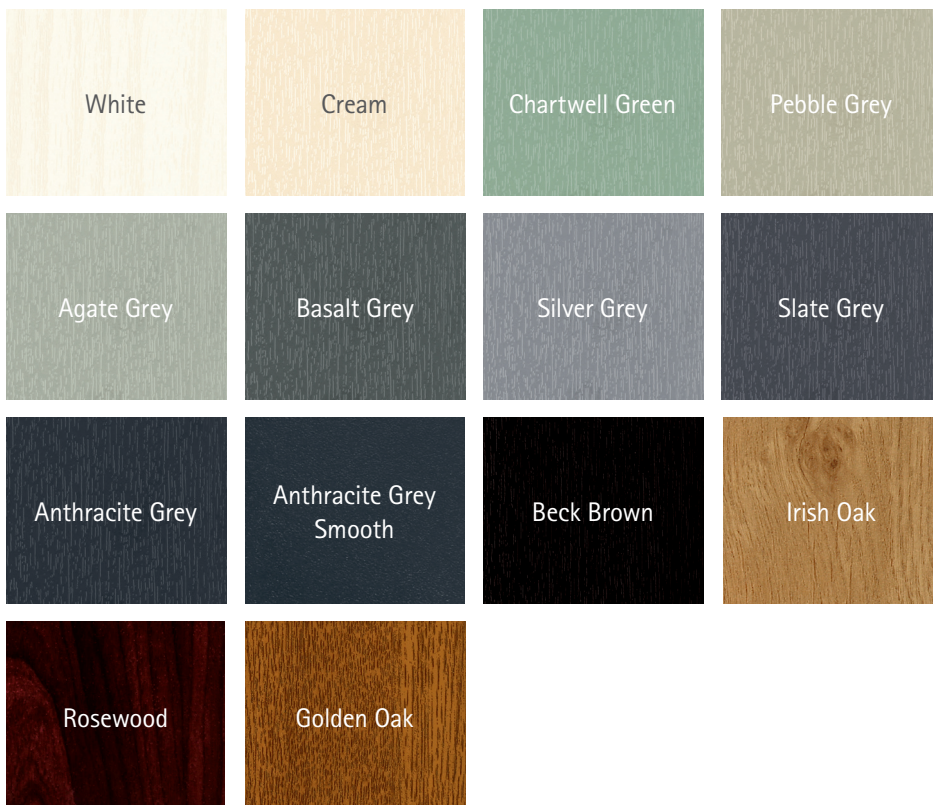
- Choice of angular (bevelled) or rounded (sculptured) frames
- Range of energy ratings available from A - C
- The 1st ever A-rated window was made from VEKA profile
- Wide choice of colours and woodgrain finishes available
- Internally glazed for enhanced security
- 70mm profile, direct replacement for timber or 1st generation PVC-U

Pick a colour

All of the beautiful flush finish products in this brochure are available in 14 colours and woodgrain options, allowing you to perfectly complement your home. Keep it classic with cool cream or white, for contemporary with grey or black, or reflect your personality with a considered choice from our green, blue and brown hues.

If you like the look of timber, but don't want the maintenance that comes with a wooden door, check out our extensive selection of woodgrain finishes - renowned as some of the industry's most realistic. We even offer a white woodgrain option for those wanting to add a textured woodgrain effect to the popular colour choice.

Your installer can help advise you on the perfect, stylish finish for your doors and windows - but ultimately the choice is yours! Make your home as unique as you are.



You choose the colour and we will match it!
We have a vast range of colour finishes available.
Please ask one of our team for more information.

Additional features

If you are looking to add the finishing touch to your windows, why not consider run-through horns on our vertical slider windows.

Or why not add Georgian bars for an authentic period look.

Run Through Horns



Are you living in a Green House?

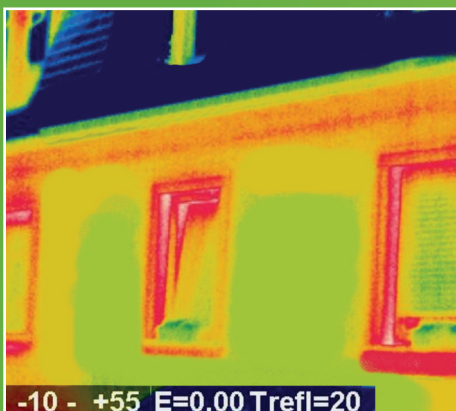
Old windows, doors and conservatories are responsible for a significant proportion of wasted energy in homes across the UK

...but we have the answer!

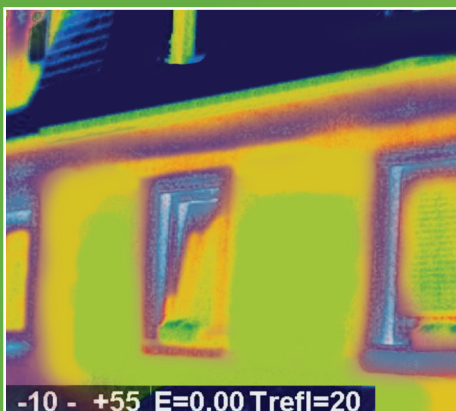
It's easy to be green...

People today are far more aware of the methods and means of reducing their impact on the environment when compared to just a few years ago. This in tandem with ever increasing energy prices has led homeowners to make improvements to their properties which benefit the environment. Loft and cavity wall insulation, solar panels and energy efficient windows and doors are the main areas of 'green' investment.

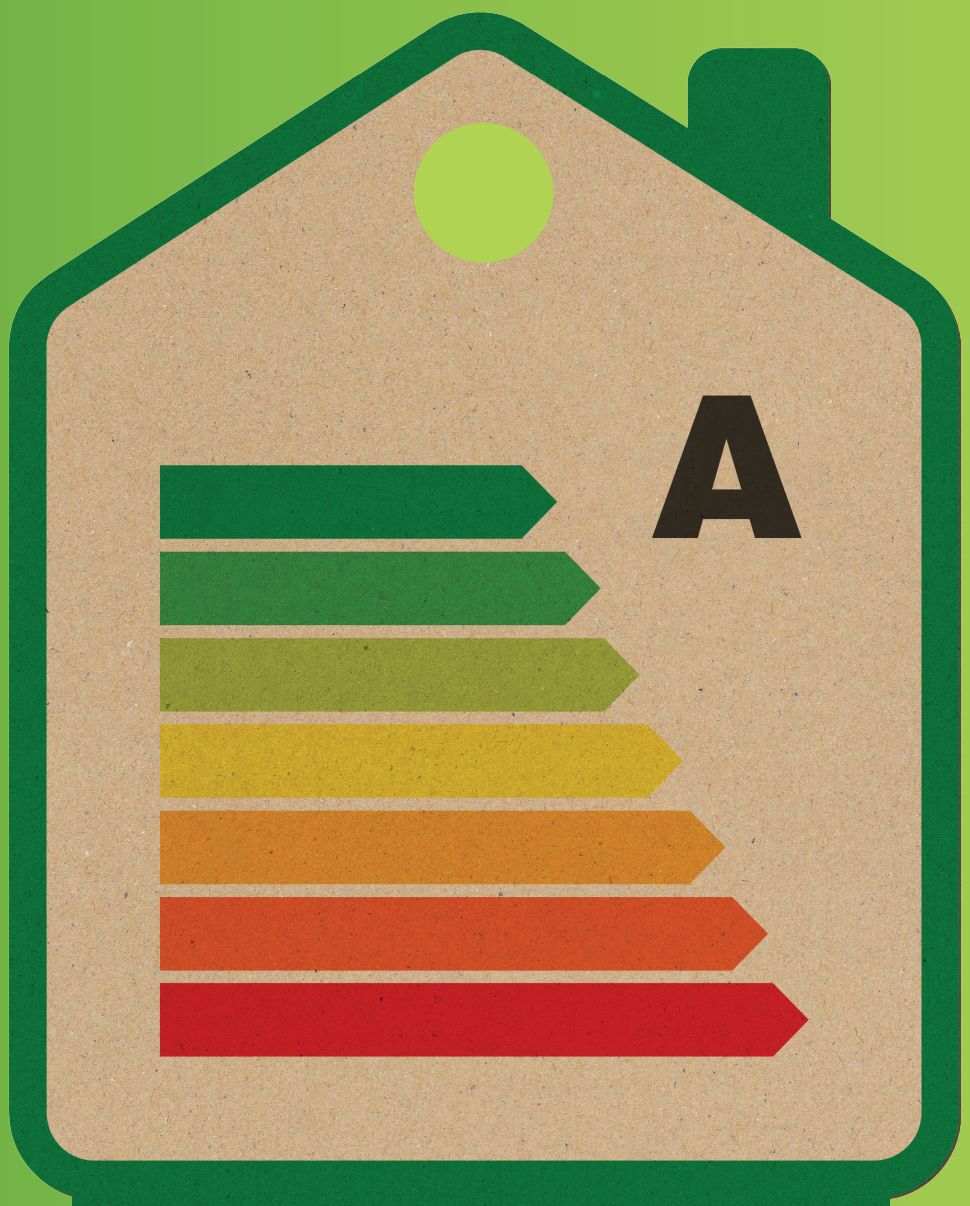
When you look at the infra-red images below, it is easy to see why more and more people are choosing to replace timber and even 1st generation PVC-U windows with the more energy efficient frames that are available today. It's such a simple way to save money and do your bit for the planet too.



The warmest areas seen here in red show where heat is being lost from the building.



Red areas have been eliminated after fitting energy efficient VEKA windows.





Our products give you...

Smaller energy bills

Replacing all single-glazed windows with A-rated double glazing could save you £££'s each year on your energy bills

A smaller carbon footprint

By using less fuel, you'll generate less of the carbon dioxide that leads to global warming - typically, 680kg a year.

A more comfortable home

Energy-efficient glazing reduces heat loss through windows and means fewer draughts and cold spots.

Peace and quiet

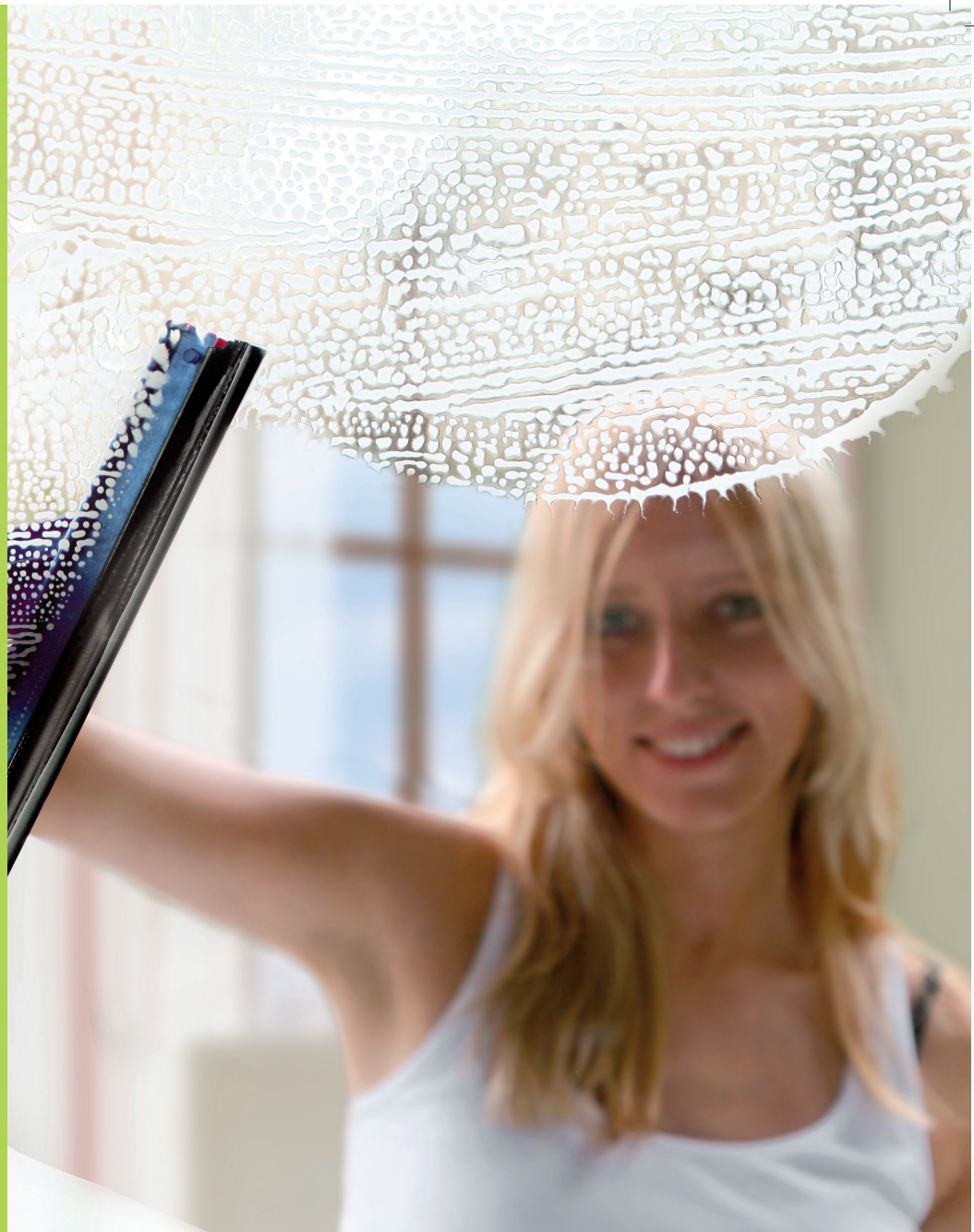
As well as keeping the heat in, new energy efficient windows insulate your home against outside noise.

Reduced condensation

Energy-efficient glazing reduces condensation build-up on the inside of windows.

Nothing but the best energy rated frames...

We have dedicated significant time and money in developing a range of energy efficient products, all of which are capable of achieving the highest Window Energy Rating (WER) values. The WER system allows consumers to make fair comparisons (based on energy efficiency) between different windows, much the same as with white goods such as washing machines and dishwashers.



PLUS they're low, low maintenance

Life is too short to be sanding and painting rotten old timber window frames - and even the old discoloured PVC frames need more care and attention than they used to. With our next generation PVC-U frames, all you need is a quick wipe with a warm soapy cloth. No fuss, no mess. Done!



Specification

Our windows can deliver a window energy rating of 85%

Casement Windows

Casements are the most popular and versatile style of window that we offer. A casement is identified by the opening part of the window opening outwards.

The number of arrangements and combinations of fixed and opening frames is endless - it really does come down to what you want and how you intend to use the adjacent room.

Select your finish and hardware from a range of beautifully crafted locking handles, and that's it - we do the rest. Our casement windows deliver the complete solution for any property from period to contemporary.



Vertical Sliders

Crafted with attention to detail, our Vertical Slider windows (also known as sash windows) combine the functional benefits and performance of a modern PVC-U window with the feel, aesthetic appeal and operational simplicity of a traditional style window.

Our Vertical Slider windows have a timeless elegance made with beautiful proportions and symmetry. They have the true looks of the original timber sash window retaining all of the character of the property itself.

The modern Vertical Slider not only emulates the aesthetics of its' traditional timber equivalent, but also offer additional benefits such as the easy maintenance of PVC-U. We also offer the option of run-through sash horns for a truly authentic look.

(Ask us for more details)



Tilt and Turn

Tilt & Turn windows provide the ideal solution for locations where window safety and window access may be an issue. The unique concealed hardware design means that the window can be set in one of two positions, either tilted or fully opening inwards.

As a result of the unique properties of the tilt & turn window, they are ideal for apartments or flats, from the ground floor up, allowing for ventilation and easy cleaning from within the property.



Tilt

TILTED POSITION

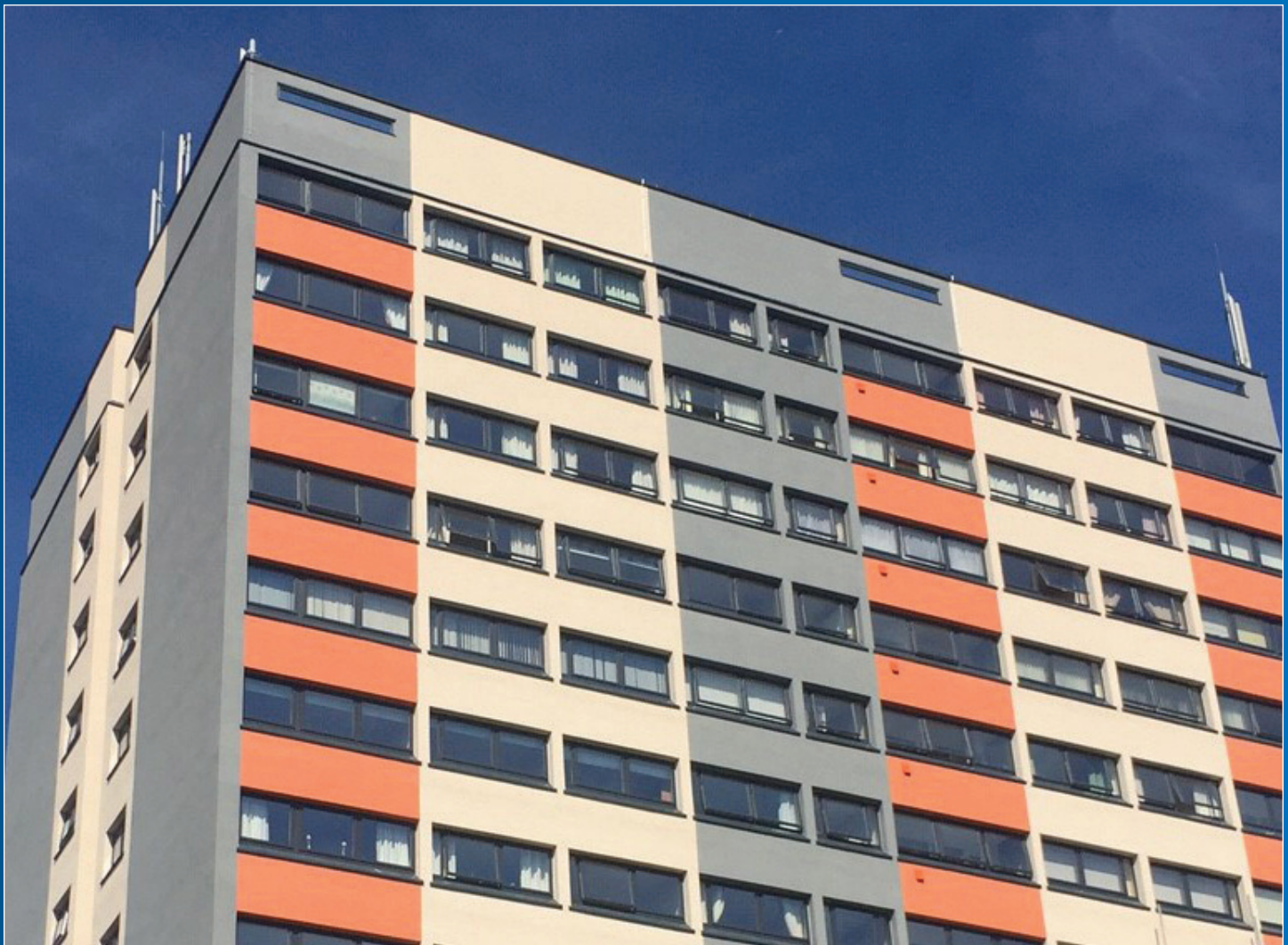
This position allows a window to tilt open inwards, providing good ventilation, but without compromising safety.



Turn

TURNT POSITION

The whole sash opens out into the room allowing for easy cleaning or maintenance.



Fully Reversible

Fully reversible windows are often used in social housing projects where there is a high rise element, or where there is a requirement for cleaning to be carried out safely from the inside of the building.

As a result of significant financial investment and extensive technical development VEKA and Halo profiles now offer a cost effective, 'A' rated fully reversible frame with a wealth of innovative features and benefits:

Key Features

- U-values as low as 0.8W/m²K (Code for Sustainable Homes, level 5)
- 'A' rated frames with just a double glazed unit
- Totally compatible with other VEKA systems
- Unique seal system for improved weather performance
- Window reverses within the axis of the hinge (not entering the room)
- Excellent 'stand -alone' product for fabricators requiring better WER
- Unique 4 chamber profile system for enhanced thermal performance
- Multi-position child restrictors



FlushSash Windows

The perfect replacement window for period properties, FlushSash Windows deliver a blend of traditional styling with the efficiency and performance you'd expect from modern windows. The simple classic lines deliver an undeniably authentic look, while the contemporary uPVC frames, featuring double or triple glazing, offer outstanding energy efficiency.



Heritage properties tend to have appealing character features that remain popular through the ages.

Unfortunately there are drawbacks of such properties, including energy inefficiencies such as draughts and damp associated with ill-fitting and single glazed windows.

Fitting FlushSash Windows can overcome these issues often associated with beautiful older houses by providing modern levels of warmth and energy efficiency, and reducing your energy bills.

uPVC construction also results in a window that doesn't rot, swell or warp, while never needing repainting.

Alongside the warmth and comfort achieved by fitting new windows to a period property, sound insulation is also an added benefit.

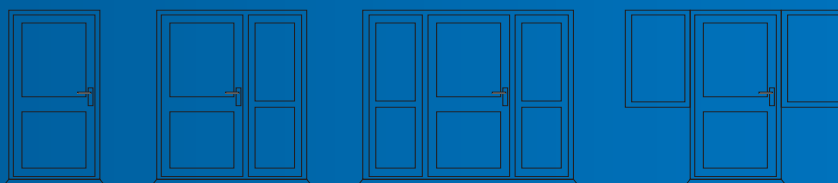
In conservation areas, there is often a requirement for homeowners to replicate original windows closely. The clean, simple lines of FlushSash Windows make them a suitable option for such houses.

Tailor-made for each property, the windows achieve both a physical and visual fit. With the option to specify different colours for the interior and exterior frames, you can complement your interior colour scheme while attaining a more traditional exterior look.

Impressive security credentials and a ten year insurance-backed guarantee will allow you to enjoy peace of mind from the outset.

UPVC Doors

Super secure, with a wide choice of styles and finishes including popular woodgrain, a new uPVC front or back door can change the look and feel of your home, giving it a unique stamp of style, which offering superior thermal efficiency to reduce draughts.



Key Features

- Strong and safe
- High security locking systems
- Wide range of colours, styles and finishes
- Low maintenance
- Energy efficient

uPVC doors can be manufactured in a wide range of different styles and can include paint and wood finishes to complement the style of your home.



Sliding Patio Door



Key Features

- Energy efficient
- Elegant look
- Compatible with all major hardware systems
- Low maintenance
- High specification weather protection
- High security locking systems
- Manufactured using VEKA Group profile
- Wide range of colours and style options
- Independent Network comprehensive ten year insurance-backed guarantee

French Doors

French Doors extend your home, bringing extra light and the illusion of more space. They create an attractive opening to a garden or patio with minimal obstruction.

As a homeowner you will be able to enjoy a better view of the outdoors all year round. French Doors are also ideal for partition wall applications - from a kitchen to a conservatory area for example.

Available in a range of coloured and woodgrain finishes to perfectly complement your home.



Bi-Fold Doors

Erase the boundary between your home and garden with Imagine Bi-Fold Doors. Bring your garden closer to your living area with beautifully framed views and light-filled rooms. These energy efficient, contemporary doors can add a new level of versatility to your home.



The concertina form of Bi-Fold Doors allows you to truly open up your home to your outside space. Stepping seamlessly from the garden to the house means you'll view your home in a new light.

VEKA's Imagine Bi-Fold Door gives you an aperture that acts as a picture frame, enabling you to enjoy the rain or snow from the warmth and comfort of your home in the winter, yet open up and extend your living space in the summer.

As a replacement to traditional Patio Doors, your local Independent Network member can advise on the best options for your home.

With secure locking and easy operation, thanks to a smooth gliding mechanism, Imagine Bi-Fold Doors are perfect for many different homes.

Inherently energy efficient, like all VEKA Group doors, these potentially vast expanses of glass do not detract from a warm and cosy

home; the cold is kept at bay while the warmth is retained inside.

A wide range of colours and woodgrain finishes gives you great autonomy over the final look and feel of your new feature doors.

Composite Doors

Our collection of composite doors are designed with meticulous attention to detail and finished to the highest possible standard. Your front door is a symbol of your home, your family and your life. It's as individual as you are. It says a lot about you. Which is why it's so important that when you choose a new door, it has to be exactly right. Not just nearly right. After all, it's going to be with you for years to come.

Secure, stylish and energy efficient

Performance

Our doors meet the requirements of the most stringent and recognised British security and safety standards. Our doors pass the PAS24 security standard, which measures resistance against forced mechanical and human entry. Our doors also pass the latest PAS23 standard, a measurement of resistance to air and water penetration, at the highest level.

High Security Performance Hardware

Doors are fitted with high security, multi-point door locks and adjustable flag hinges as standard. All conform to the Secured by Design official Police security initiative. The Secured By Design standard is recognised by the Association of British Insurers.



A new composite door will keep you, your family and your possessions safe and sound. It will keep out the cold and wet, yet keep in the warmth. Get ready to adore your door from the moment it arrives.



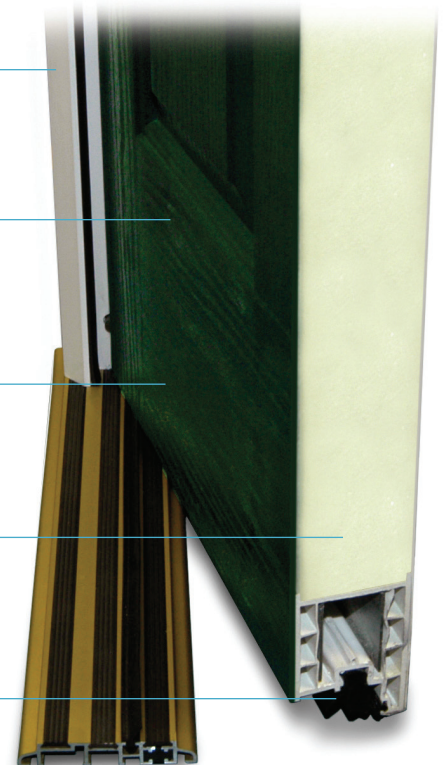
Steel reinforced 70mm PVC-U outerframe extruded to BS7413 specifications

Thermoset GRP skin, with natural woodgrain effect. Low maintenance. Strong colour fastness UV tested to withstand strong sunlight, less prone to fading

68mm thick door slab - better thermal and acoustic properties than thinner door slabs

Environmentally friendly high density, CFC-free, polyurethane foam core.

Substrate individually made to measure PVCu steel reinforcement



Door Furniture

Add the finishing touches to your door by choosing from a complete range of matching quality door handles, letterplates, urn knockers, spyholes, security chain and numerals in gold, chrome, black or white effect finish.

Threshold

Optional aluminium low thresholds are available at 15mm (Part 'M Compliant) for easier wheelchair/pram access or 30mm heights.

UV Stable Tested

Doors are tested to withstand extreme sunlight conditions and are UV stability guaranteed to 10 years.

Our composite doors are available in both bevelled and sculptured outerframes - perfectly matching the other windows and doors in your home.



Timber free construction offers greater rigidity and reduces the risk of twisting, swelling, bowing or rotting.

ENVIRONMENTAL CONSIDERATIONS

Our products are environmentally-friendly.

We use CFC free polyurethane foam for the inner core and a timber free construction throughout. Manufactured under ISO 14001 Environmental Management System licence. All extruded components are sourced in the UK.



Sovereign Group Limited was formed in 1973 and was one of the original pioneers of PVC Windows and Doors in the UK, a trailblazer in modern methods of construction at the time.



Sovereign Group has earned an unrivalled reputation as principle contractor, manufacturer and installer of windows and doors operating exclusively within the public sector. Sovereign Group works with Local Authorities, Housing Associations, Health Trusts, Educational establishments and for the MOD. We also work in partnership with main contractors and mixed tenure house builders that operate within the sector delivering external envelope solutions on a National basis. Sovereign Group Limited have a demonstrable 47-year track record in working in occupied homes and delivering exceptional products and service on time and within budget.

We have developed our processes with our customers' customer as the main emphasis of our external activity. We understand that our site operatives and our customer facing personnel are key to getting the job right first time every time. Our customer satisfaction results supports this philosophy with real time data. Sovereign Group are a true specialist window and door manufacturer. We make all



our PVC windows and composite doors in our own 180,000 square foot factory in the UK. We also make all our standard double-glazed units giving us complete control over supply chain and component quality. Over the past 3 years, we have made an average of 71,000 windows and doors per year and over 65% have been on a supply and fit basis. We have an experienced team of over 160 construction professionals and skilled operatives.



Vale Street, Nelson, Lancashire BB9 0TA
T. 01282 618171 E. info@sov-group.co.uk

www.sov-group.co.uk

